

Star★Types

by Michael Erlewine

C O M P A T I B I L I T Y

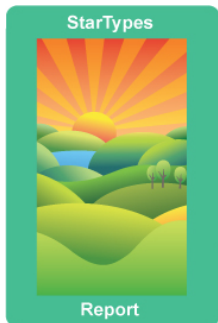


StarTypes Compatibility Report for:
Hillary Clinton and Bill Clinton

This reading compliments of:

Compliments of -
Cosmic Patterns
6212 NW 43rd St Suite
Gainesville, FL 32653
(352) 373-1504

Welcome



Welcome to StarTypes, your personal astrology report written and illustrated by astrologer/author Michael Erlewine who, with over 40 years of experience in astrology, has written some twenty-some books on astrology and dozens of computer astrological programs. Erlewine writes:

"I have lectured, taught classes, and done private consultations for more years than I want to think about. What I have found works best is a one-to-one presentation of the astrological chart - your personal astrology. In the StarTypes reports, I have tried to do just that: walk you through what is most important about your astrology chart, step-by-step, just as I would if we sat down together for a chart reading. StarTypes Reports are illustrated and easy to read. After all, they are all about you!"

Patterns in the Sky



StarTypes astrology is both ancient and modern. It is ancient, because it uses the traditional natal chart that astrologers have used throughout history. It is modern because it also takes advantage of what astronomers have learned about the heavens and our solar system in these modern times. The result is a unique combination of ancient and modern astrology that provides a unique perspective on your particular birth chart and therefore your life. This is how it works:

StarType analysis plots large-scale planetary patterns as seen from Earth and compares those patterns to corresponding patterns astronomers see functioning throughout our entire solar system. StarTypes charts not only the outer circumstances of your birth (your personality and Karma), but also the internal and spiritual qualities embedded in that same moment, your inner motivation, what has been called your Dharma or Life Path. The result is an enhanced perspective that in effect amounts to a stereo image of your birth moment and chart, looking inside and out.

StarTypes analysis offers a very complete perspective on your birth moment, with insights into what talents you naturally have, how those talents might be used, as well as your relationship role with partners, romantic and otherwise. Check it out. What follows is your own StarType report. I hope you enjoy it.

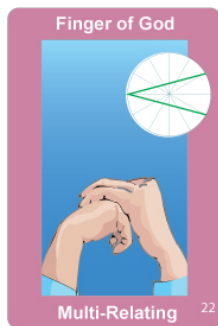
Michael Erlewine, Author of StarTypes



StarType for Hillary

The heavens above and surrounding us are in constant change as the Sun, Moon, and planets move in their orbits to create vast kaleidoscope-like patterns in the sky, what has been rightly called "The Cosmic Dance." StarType analysis sorts through these many changing patterns and isolates the strongest and most pronounced pattern in effect at the moment of your birth. This cosmic pattern or archetype is your "StarType," and it best represents what is happening in the heavens at the moment of your birth. All in all there are some sixty major StarType patterns that have been recognized, and each represents a particular kind of individual and approach to life.

Your StarType is more than just your personality and the circumstances in which you happen to find yourself in life. It also describes who you are at heart, the real inner you behind all that is going on the outside, plus your possibilities - how you look at and approach life. StarTypes reveal the 'you' as only your closest friends know you, as you know yourself. What follows is a description of our StarType.



This StarType:

Hillary has a StarType with a real sense of striving and yearning to complete or resolve the situation - whatever is at hand. Over time, this need for resolution, this sense of immanent resolution, of always expecting something, of waiting could manifest almost as a waiting for the other shoe to drop, even a sense of premonition at best, and apprehension and even foreboding about what is to come (the future in general) at worst. The concept to grasp is this openness or expectancy for something to happen that will resolve or relieve this expectancy. Also: perhaps she has great curiosity, interest in exploring and getting into details.



StarType for Bill

The heavens above and surrounding us are in constant change as the Sun, Moon, and planets move in their orbits to create vast kaleidoscope-like patterns in the sky, what has been rightly called "The Cosmic Dance." StarType analysis sorts through these many changing patterns and isolates the strongest and most pronounced pattern in effect at the moment of your birth. This cosmic pattern or archetype is your "StarType," and it best represents what is happening in the heavens at the moment of your birth. All in all there are some sixty major StarType patterns that have been recognized, and each represents a particular kind of individual and approach to life.

Your StarType is more than just your personality and the circumstances in which you happen to find yourself in life. It also describes who you are at heart, the real inner you behind all that is going on the outside, plus your possibilities - how you look at and approach life. StarTypes reveal the 'you' as only your closest friends know you, as you know yourself. What follows is a description of our StarType.



This StarType:

"For ideas must be made to matter." This might be the slogan for Bill, and of this StarType, "The Entrepreneur," a type that is driven to react to any practical contact with ways to improve the situation - always bringing new ideas into the practical sphere.

For one, Bill naturally gets the big picture, just taking in any situation, and grasping the overall gist of it. This is Bill. But coupled with this supervisor or overseeing ability is something just a little rare and that is: a constant drive to implement whatever he sees in his mind, as practical solutions in the day-to-day world. He can't rest until the ideas that he sees in the overview of his mind are implemented here on earth in a very practical way. Thus, the nickname: "The Entrepreneur," for his natural drive finds him endlessly risking all to bring something into reality that was only an idea before.

Approach to Relationships



Approach to Relationships - Hillary



As for relationships, Hillary would not naturally like the roll of the loved one, the object of affection. Instead, she would tend to assume to roll of lover, taking care or overseeing the relationship. Although that is the closest to a standard relationship role for her, even that may prove a little unstable.

There is a strong need in Hillary to learn, an urge to try out new things, to perhaps travel, to meet people and, in general, always be into something new. She seems to grow and learn about himself when she is covering new territory. In some cases, she may even provoke or evoke reactions; cause situations to come about that she can be involved in and learn about.

Approach to Relationships



Approach to Relationships - Bill



Most definitely Bill requires and is happiest in relationships. He needs tying down, not to constrict or restrict him, but to ground and foot his endless ideas into reality. And a partner can help this take place. Although he is, by nature, a visionary and always seeing the forest and not the trees, blown around by the very nature of the mind, he very much needs grounding - being brought to earth.

So don't feel bad about Bill not being particularly independent. He knows well the meaning of loneliness and the last thing he needs is more distance. He has that. Bill is distant and far-seeing and all that. And sensitive! he feels every little change and thing that comes whistling past. What would help would be to find a partner who can help bring him more down to earth, help to ground him and bring experience.

Given grounding and experience, Bill's very fertile mind and imagination just can't help but produce something real, something of value.

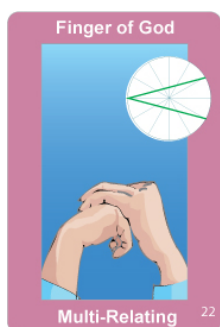


Things Are Not Always What They Seem - Hillary

Things are not always what they seem, especially when meeting someone for the first time. How do those around you see you? Are you a "What You See Is What You Get" type or are you a "What You See is Not What You Get" type. Are you different once folks get to know you? StarTypes has way of measuring the difference.

On the following page is a comparison of the traditional astrology chart of the outer appearances of this individual (personality), the way this person comes across AND the chart of their inner Self (Dharma chart), the individual as they are when you come to know them better. This will give you an idea if what you see is in fact what you get.

Your Inner and Outer StarTypes



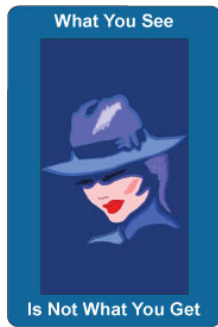
Inner StarType



Outer StarType

Above find your inner and outer StarType cards. Perhaps the more important of the two is the inner StarType, the one on the left. This is what is called your Dharma of Life-Path Chart. It is who you are inside, as people get to know you. This is your heart essence, how you function in this world.

On the right is the chart of how you appear to others, your personality, the way you come across upon first contact - the initial impression. These two cards can be similar in type and function or very different. If the border color of the cards is the same (green, red, blue, or rose), then you are more-or-less how you appear, that is: what you see is what you get. If they are different, colors, then you may be quite different on first impression than you are when people get to know you. In that case, what you see is not what you get.



StarType Appearances

You Are NOT What You Appear To Be

On the surface Hillary appears Very idea oriented, at home in the mind, perhaps a little shy or awkward socially, but a strong idea person, skilled with words, and able to grasp patterns and concepts with easy. Not too social, but very caring for others, and compassionate..

Appearances aside, Hillary in fact is Eager for contact, reaching out for contact, stirring things up, precipitating events..



Things Are Not Always What They Seem - Bill

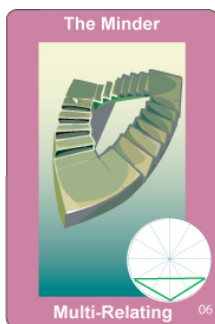
Things are not always what they seem, especially when meeting someone for the first time. How do those around you see you? Are you a "What You See Is What You Get" type or are you a "What You See is Not What You Get" type. Are you different once folks get to know you? StarTypes has a way of measuring the difference.

On the following page is a comparison of the traditional astrology chart of the outer appearances of this individual (personality), the way this person comes across AND the chart of their inner Self (Dharma chart), the individual as they are when you come to know them better. This will give you an idea if what you see is in fact what you get.

Your Inner and Outer StarTypes



Inner StarType



Outer StarType

Above find your inner and outer StarType cards. Perhaps the more important of the two is the inner StarType, the one on the left. This is what is called your Dharma of Life-Path Chart. It is who you are inside, as people get to know you. This is your heart essence, how you function in this world.

On the right is the chart of how you appear to others, your personality, the way you come across upon first contact - the initial impression. These two cards can be similar in type and function or very different. If the border color of the cards is the same (green, red, blue, or rose), then you are more-or-less how you appear, that is: what you see is what you get. If they are different colors, then you may be quite different on first impression than you are when people get to know you. In that case, what you see is not what you get.

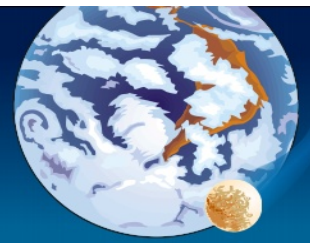


StarType Appearances

You Are What You Appear To Be

There is no difference between how this person appears and how they are when you get to know them. What you see is what you get. Bill is Caring, and kind, perhaps a little shy or self-conscious. Not too social, but very skilled with words and ideas. Always interested in other people, caring for them. An inner drive that is apparent to all.

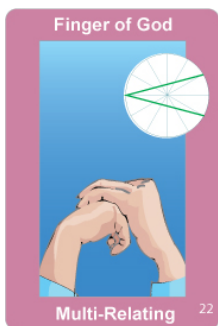
Star★Types Relationships



The table on this page represents the essential StarType elements for each partner, and not just the key StarType for each. These main elements are marked with a checkmark along the left and right sides of the table, along with how many times they occur, their StarType number, and a percentage indication as to how strong the element is (100% is the strongest possible). The four basic relationship types are color-coded from top to bottom, with green for the [Lover] StarType, red for the [Loved One] StarType, blue for the [Independent] StarType, pink for the [Multi-relational] StarType, and yellow for other types.

The purpose of the table is to let you see at a glance the various components of the relationship and their strengths.

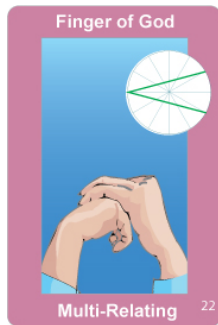
Hillary



Bill



	Occ.	ST#	%	Description	%	ST#	Occ.	
				Compassionate, Big Picture, Lover				
				Proactive, Entrepreneurial	54%	#5	1	✓
				Alternate View	61%	#9	1	✓
				Psychological, Mental, Complex	08%	#4	3	✓
✓	1	#50	01%	Caring, Mental Work				
				Little Obsessive, Recursive Mind				
				Seminal, Deep				
				Attractive, Gregarious, People Loving				
✓	1	#14	89%	Busy Achiever, Doing, Doing				
				Very Independent, Self-sufficient				
				Creative: Acts, then Thinks				
				Conceptual: Thinks, Then Does				
				Very Active Psychological, Mystic				
				Psychological, Spiritual Doer				
				Laser Mind, Can Think and Do	66%	#10	0	✓
✓	2	#30	68%	Enjoys Many Contacts, Many Places				
				Reactive, Responds to Anything				
✓	1	#22	93%	Yearning, Waiting, Wishing				
				Extra Creativity	40%	#43	1	✓
				Synchronicity, Coincidence	89%	#46	1	✓
				Completion				



For Hillary

Hillary has a StarType with a real sense of striving and yearning to complete or resolve the situation - whatever is at hand. Over time, this need for resolution, this sense of immanent resolution, of always expecting something, of waiting could manifest almost as a waiting for the other shoe to drop, even a sense of premonition at best, and apprehension and even foreboding about what is to come (the future in general) at worst. The concept to grasp is this openness or expectancy for something to happen that will resolve or relieve this expectancy. Also: perhaps great curiosity, interest in exploring and getting into details. As for relationships, Hillary would not naturally like the roll of the loved one, the object of affection. Instead, she would tend to assume to roll of lover, taking care or overseeing the relationship. And, although that is the closest to a standard relationship role for her, even that may prove a little unstable. There is a strong need in Hillary to learn, an urge to try out new things, to perhaps travel, to meet people and, in general, always be into something new. She seems to grow and learn about himself when she is covering new territory. In some cases, she may even provoke or evoke reactions; cause situations to come about that she can be involved in and learn about. With this StarType, there is a very strong need for relationships of all kinds, and she can benefit from interaction with both green-bordered and red-bordered cards. **KEYWORDS**

- Yearning.
- Striving.
- Unresolved.



For Bill

"For ideas must be made to matter." This might be the slogan for Bill, and of this StarType, "The Entrepreneur," a type that is driven to react to any practical contact with ways to improve the situation - always bringing new ideas into the practical sphere. For one, Bill naturally gets the big picture, just taking in any situation, and grasping the overall gist of it. This is Bill. But coupled with this supervisor or overseeing ability is something just a little rare and that is: a constant drive to implement whatever he sees in his mind, as practical solutions in the day-to-day world. He can't rest until the ideas that he sees in the overview of his mind are implemented here on earth in a very practical way. Thus, the nickname: "The Entrepreneur," for his natural drive finds him endlessly risking all to bring something into reality that was only an idea before.

Most definitely Bill requires and is happiest in relationships. He needs tying down, not to constrict or restrict him, but to ground and foot his endless ideas into reality. And a partner can help this take place. Although he is, by nature, a visionary and always seeing the forest and not the trees, blown around by the very nature of the mind, he very much needs grounding - being brought to earth. So don't feel bad about his not being particularly independent. He knows well the meaning of loneliness and the last thing he needs is more distance. He has that. Bill is distant and far-seeing and all that. And sensitive! he feels every little change and thing that comes whistling past. What would help would be to find a partner who can help bring him more down to earth, help to ground him and bring experience. Given grounding and experience, Bill's very fertile mind and imagination just can't help but produce something real, something of value.

Bill is a natural visionary and the mind is where he roams and feels at home. At the same time, he is seldom still, being driven to have experience and to react to everything around him. Bill, more than most StarTypes, could benefit from mixing it up with some of the red-bordered StarTypes, like the T-Square (#1) and, of course, the Grand Cross (#3). For him, all contact (meaning, touching, and physical contact) is just grist for his mill, causing his strong mind to come to practical terms, to touch down into the physical. He needs physical contact to balance out and these other StarTypes can provide that. As for the blue-bordered cards, keep in mind that they have the qualities of both the red-bordered and the green-bordered cards within their makeup. When relating to them, Bill will want to invoke the attention-demanding parts of them, having them take on the role of the loved one - someone for him to look after.

KEYWORDS

- Conceptual.
- Visionary.
- The Lover.
- Caregiver.
- Intellect.

Relationship List



Relationships - Hillary



Relationships:

Hillary needs relationships.

Romantic Role:

Hillary likes to take on the role of "lover" or caretaker in a relationship.

Office Role:

In an office environment, Hillary prefers intellectual work and low-level management.

Independent:

No.

Interdependent:

Yes.

Needy:

Yes, in relationships.

Relationship List



Relationships - Bill



Relationships:

Bill needs relationships.

Romantic Role:

Bill likes to take on the role of "lover" or caretaker in a relationship.

Office Role:

In an office environment, Bill prefers the role of supervisor or manager of some kind.

Independent:

No.

Interdependent:

Yes.

Needy:

Yes, in relationships.

Basic Compatibility

- Naturally compassionate
- Aware of others
- Generally kind
- Solid management talent
- Not a touchy-feely type of person
- A bit of a dreamer
- Thinks outside the box
- High energy
- Runs to matters of the mind
- Is not much fun
- Abstract
- Meticulous
- Too much theory
- Appreciative of social situations
- Not a people person
- Lack of enthusiasm
- High energy
- Ambitious
- Driven to succeed
- Grasp concepts
- Pick out patterns
- Persistent drive
- A bit of a dreamer
- The Entrepreneur
- Thoughtful, careful, and meticulous
- Not a people person
- Enthusiasing others
- Runs cool, not warm
- A good group leader
- A great advisor or consultant



Bill: StarType #05, "The Entrepreneur"

Hillary: StarType #22, "Finger of God"

Not a lot of substance here, nothing to hang on to, no object of this relationship. Both are green-bordered cards, and share a common desire to take care of and administer to the loved one. Here there is no object. Both are very subjective, tending toward using the mind, not particularly physical, but needing physical contact. This would be better as some kind of cooperative effort to accomplish a goal, work together, rather than a lover relationship. Where is the beef?

Friends Comparison



Here is an unlikely combination, but not an impossible one, certainly what society might call an odd couple. Of the two, Hillary is the "thinker," or the more-mental one, able to handle concepts and to think clearly. And while Bill is more mental than not, he is just not all that interested in all that stuff at the outset.

Bill is more concerned with just making a splash, with being known and felt, in getting some kind of response or reaction wherever he goes. It would seem that there is never enough of the new and different for him, whether that is visiting new places or meeting an endless series of new people. He is always game and not likely to just be passive about that. Bill is an instigator, even a troublemaker at times, It is almost as if he believes that provoking a response is the only way he believes people acknowledge him.

This is probably way too obvious or in-your-face for a sensitive soul like Hillary, so it is hard to know how any real chemistry will result. My guess is that this is not a long-term relationship, or if it is, it will require that both folks find something outside of their own give and take to hold their interest.

The Inner Relationships



Hillary considers Bill good verbal company, and the two of them have not trouble talking and exchanging views. And both of them are more mental than not, particular Bill, who probably is a little bit brilliant for that matter. Hillary is more modest as a thinker, but is not afraid to think out of the box.

Socially, these two are identical in that neither of them is comfortable in or seeks out a crowd, and public displays tend to embarrass them rather than thrill them. They are not, however, above keeping their distance from the crowd and happily analyzing and criticizing what they see. But mixing and pressing the flesh, I guess not.

Bill will probably serve as counselor and advice-giver to Hillary, for HE2 tends to have HIS2 head on straight, while Hillary can be all over the board with what she thinks. Neither is very willing to sacrifice what they think and dream about to the test of real life.

Profile Summary



Profile Summary for Hillary



While Hillary would probably not be happy (or that useful) in a managerial capacity, she is perfect when it comes to being part of a workforce or group, but her talents are mental rather than physical. She is a hard-working, kind hearted, and a careful worker, who uses her brain first and then acts, rather than vice versa. In fact, thinking and working with the mind in a detailed way, or perhaps in some service-oriented capacity, providing something for others or caring for others, is perhaps the best work. Hillary is good at the detail work, but not at her best with the grand plans, as she tends to see the trees, but not the forest.

Hillary is very active, always eager for experience, looking to get more involved, rather than less involved. She has an endless thirst for things new, likes to go places, meet people, whatever exposes her to something different. She makes friends and acquaintances easily, maintains them and she can make a good communicator and go-between. By nature, she is thoughtful, given to detail work. Although very active, Hillary tends to run a little cool when it comes to glad-handing. A better way to say this is that Hillary is a mental glad-hander, meeting folks with the mind, if not the warmth of rubbing shoulder to shoulder. She can be hard to tie down and make stay put, and likes to be on the move. She may be very enthusiastic, responding to almost any new thing that comes along. At times, a bit over-reactive Hillary may have a tendency to precipitate events, to cause things or people to react, for good or ill. Hillary is most happy when surrounded by friends that she can look up to and receive guidance from.

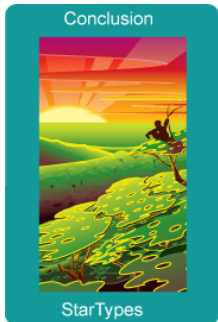
Profile Summary for Bill



Bill is all about "mental," using the mind, and has great conceptual abilities, grasps things with his mind with ease, and can pick out the patterns right off. In other words: He always sees the forest and the trees. This talent for grasping abstract concepts coupled with a broad vision makes him perfect for management that involves planning, organizational matters, and sizing things up. Bill is naturally forward looking, eager and always interested in the future, at times even reaching the visionary level.

He is naturally compassionate, aware of others, and is generally kind. As mentioned Bill's management talent is solid, but this can leave his co-workers feeling a bit cool on the cool side, since he is not a touchy-feely type of person. Bill thinks outside the box, and that 'outside-ness' or distance makes him probably NOT the best person to take the visiting client out to dinner, because he runs to matters of the mind and is not much fun in the warm and cuddly sense. Bill's broad mind and dependence on operating from a fairly abstract place can make him impractical in social situations, due to a lack of experience and common sense.

Conclusion



This concludes your StarType Compatibility Report. In this report we have tried to point out not only the individual characteristics of each partner and how they might approach relationships, but also how the two partners may interface and get along. StarTypes compatibility represents the potential for the relationship and the relationship roles each of the partners naturally find comfortable. We hope you have enjoyed it.